

Tuesday, January 11, 2022

📧 Get Global FX Insights via email - [click here](#)



Global FX Insights

by LMAX Group Research & Analytics

Comprehensive daily market research and analytics, with insightful commentary and charts

Suspicious moves [🔊 Wake-up call](#)

There has been no apparent change to the gloomy fundamentals, and yet, somehow, out of nowhere, US equity futures rocketed higher after the close on Monday. The move looked like something that should have been triggered by some kind of event, and yet, nothing to speak of.

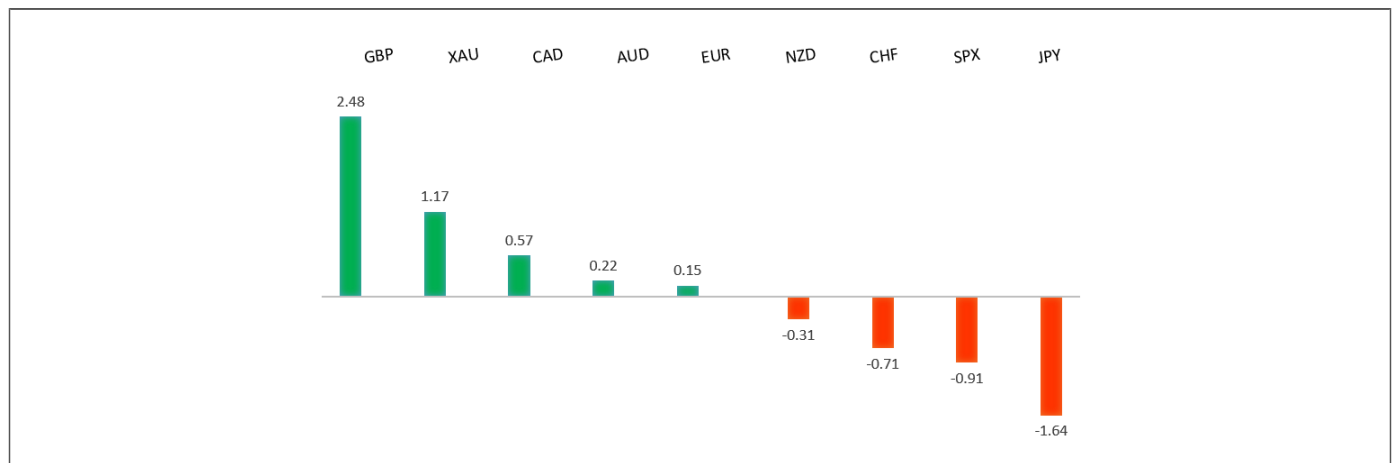
Technical highlights [📺 Daily Video](#)

- [EURUSD](#) Holding up by 61.8% fib
- [GBPUSD](#) Pushing to key resistance
- [USDJPY](#) Well capped above 116.00
- [AUDUSD](#) Down into critical support
- [USDCAD](#) Bullish structural shift
- [NZDUSD](#) Retests multi-month low
- [US SPX 500](#) Finally rolling over
- [GOLD](#) (spot) Supported on dips

Fundamental highlights

- [EURUSD](#) Euro still well offered into rallies
- [GBPUSD](#) Pound higher on BOE expectations
- [USDJPY](#) Talk of BOJ upping inflation forecast
- [AUDUSD](#) Aussie gets boost as iron ore bucks trend
- [USDCAD](#) Loonie sold as US equities struggle
- [NZDUSD](#) Sentiment deterioration hits Kiwi
- [US SPX 500](#) Stocks vulnerable at record highs
- [GOLD](#) (spot) Dealers report plenty of demand

30 Day Performance vs. US dollar (%)



Suggested reading

- [Matt Damon Isn't the Cure for Crypto's Crack Up](#), B. Ghosh, **Bloomberg** (January 11, 2022)
- [The Fed Can Neither Shrink You, Nor Elevate You](#), J. Tamny, **Forbes** (January 10, 2022)

EURUSD - technical overview

Setbacks have extended to retest the critical 61.8% fib retrace off the 2020 low to 2021 high move. Technical studies are now tracking in extended territory on the weekly chart, warning of the need for a corrective bounce ahead. Look for the market to hold up on a weekly close basis above the 61.8% fib retrace around 1.1275. Back above 1.1465 strengthens outlook. Weekly close below 1.1275 negates.



- **R2 1.1465** - 15 November high- Strong
- **R1 1.1387** - 31 December high - Medium
- **S1 1.1222** - 15 December low - Medium
- **S2 1.1186** - 24 November/2021 low - Strong

EURUSD - fundamental overview

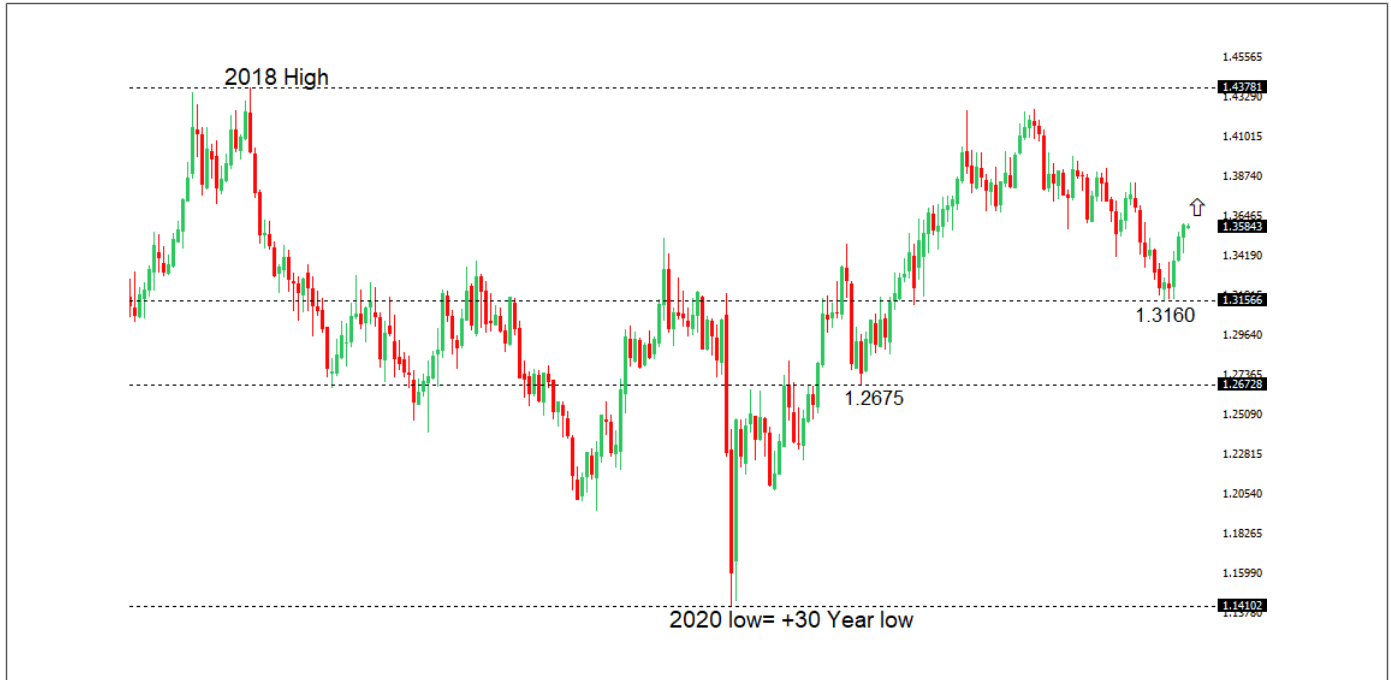
No major updates into Tuesday. There's been a lot of choppy sideways price action. But ultimately, the Euro remains well capped into rallies on monetary policy divergence between the ECB and Fed. Looking ahead, Tuesday's calendar is light, with no first-tier data on the docket.

EURUSD - Technical charts in detail

[Watch now](#)

GBPUSD - technical overview

The market is in a correction phase in the aftermath of the run to fresh multi-month highs earlier this year. At this stage, additional setbacks should be limited to the 1.3000 area ahead of the next major upside extension towards a retest and break of critical resistance in the form of the 2018 high. Back above 1.3608 takes pressure off the downside.



- **R2 1.3608** - 9 November high - Strong
- **R1 1.3604** - 10 January high - Medium
- **S1 1.3409** - 29 December low - Medium
- **S2 1.3339** - 23 December low - Medium

GBPUSD - fundamental overview

The Pound retains a bid tone into Tuesday on the back of February BOE rate hike expectations. The Pound has also traded to a new post-pandemic high against the Euro. Looking ahead, Tuesday's calendar is light, with no first-tier data on the docket.

[Watch now](#)

USDJPY - technical overview

The longer-term trend is bearish despite the recent run higher. Look for additional upside to be limited, with scope for a topside failure and bearish resumption back down towards the 100.00 area. It would take a clear break back above 116.00 to negate the outlook.



- **R2 117.00** - Figure - Strong
- **R1 116.36** - 4 January/**multi-month high** - Medium
- **S1 114.95** - 3 January low - Medium
- **S2 114.00** - Figure - Strong

USDJPY - fundamental overview

The Yen has been well offered into 2022 on flow from US Dollar demand on diverging Fed/BOJ policy. But last week's round of intense risk off flow in US equities could not be ignored, with the Yen finding demand on the traditional correlation. Meanwhile, the BOJ is said to be considering upping its inflation forecast. Looking ahead, Tuesday's calendar is light, with no first-tier data on the docket.

[Watch now](#)

AUDUSD - technical overview

The Australian Dollar has been in the process of a healthy correction following the impressive run towards a retest of the 2018 high in 2021. At this stage, the correction is starting to look stretched and setbacks should be well supported above 0.7000 on a weekly close basis. A weekly close below 0.7000 will force a bearish shift.



- **R2 0.7300** - Figure - Strong
- **R1 0.7278** - 31 December high - Medium
- **S1 0.7083** - 20 December low - Medium
- **S2 0.6993** - 3 December/2021 low - Strong

AUDUSD - fundamental overview

Overall, the Australian Dollar is under pressure, mostly on the back of diverging Fed/RBA policy and this latest dump in US equities. But we have seen some demand in recent sessions as iron ore bucks the commodities sell off trend, rising towards October highs, and as building approvals, retail sales, and trade data comes in healthy. Looking ahead, Tuesday’s calendar is light, with no first-tier data on the docket.

USDCAD - technical overview

Finally signs of a major bottom in the works after a severe decline from the 2020 high. A recent weekly close back above 1.2500 encourages the constructive outlook and opens the door for a push back towards next critical resistance in the 1.3000 area. Any setbacks should be well supported into the 1.2200s.



- **R2 1.2814** - 6 January high - Strong
- **R1 1.2731** - 7 January high - Medium
- **S1 1.2620** - 31 December low - Medium
- **S2 1.2607** - 8 December low - Strong

USDCAD - fundamental overview

Overall, the Canadian Dollar is under pressure into 2022, falling victim to diverging central bank policy, a worsening virus outlook in Canada and broad based risk off flow. Looking ahead, Tuesday’s calendar is light, with no first-tier data on the docket.

NZDUSD - technical overview

The market has entered a period of intense correction after running up to a yearly and multi-month high. Back below 0.6700 would suggest a more significant bearish structural shift.



- **R2 0.6894** - 25 November high - Strong
- **R1 0.6868** - 1 December high - Medium
- **S1 0.6701** - 15 December/**2021 low** - Strong
- **S2 0.6650** - Mid-Figure - Medium

NZDUSD - fundamental overview

Overall, economic data out of New Zealand has been softer of late, RBNZ rate hike expectations have been scaled back, the phased border reopening has been delayed due to omicron, and risk off flow has soured sentiment. All of this has been behind this latest wave of Kiwi underperformance into 2022. Looking ahead, Tuesday's calendar is light, with no first-tier data on the docket.

US SPX 500 - technical overview

Longer-term technical studies are looking quite exhausted and the market is showing signs of wanting to roll over after racing to another record high. At the same time, the latest breakout into the 4800 area introduces the possibility for the next major upside extension towards 5000. At this stage, it will take a break back below 4500 to take the immediate pressure off the topside.



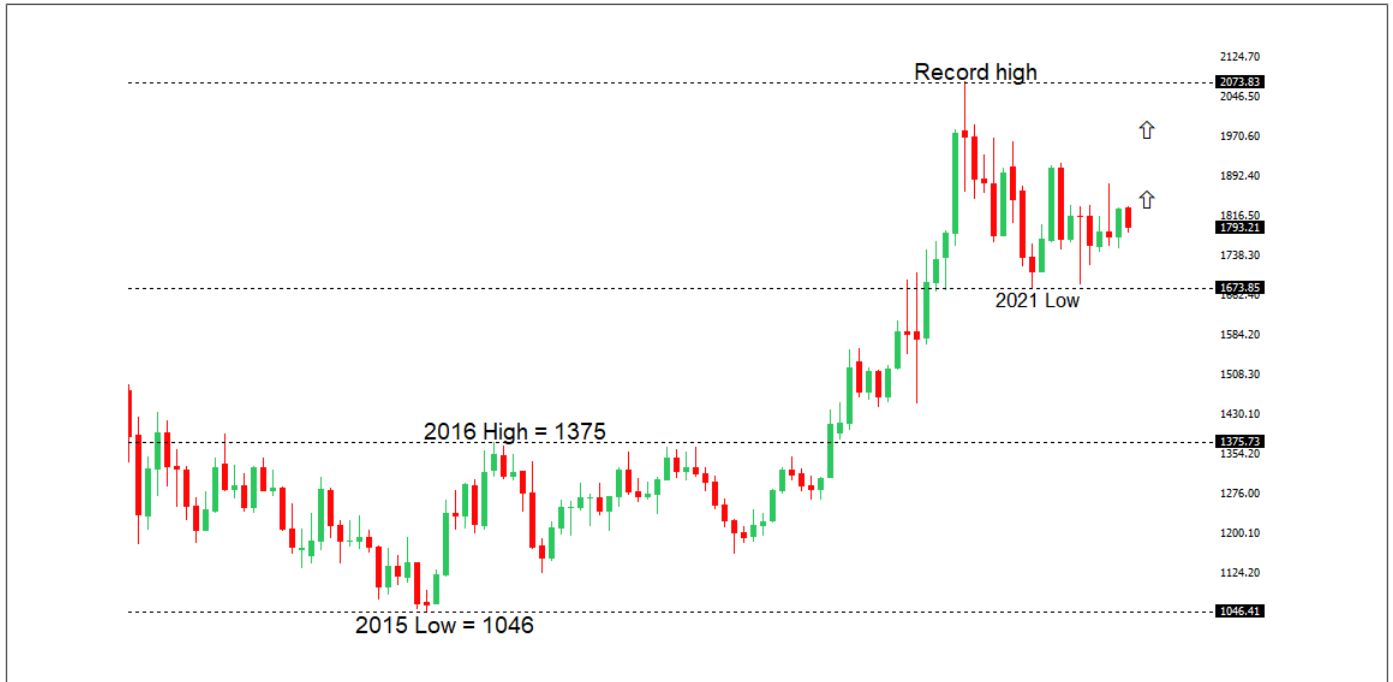
- **R2 4850** - Psychological - Strong
- **R1 4821** - 4 January/**Record high** - Medium
- **S1 4533** - 20 December low - Medium
- **S2 4496** - 3 December low - Strong

US SPX 500 - fundamental overview

We're trading just off fresh record highs, and yet, with so little room for additional central bank accommodation, given an already depressed interest rate environment, the prospect for sustainable runs to the topside on easy money policy incentives and government stimulus, should no longer be as enticing to investors. Meanwhile, ongoing worry associated with coronavirus fallout and risk of rising inflation should weigh more heavily on investor sentiment in Q1 2022.

GOLD (SPOT) - technical overview

The 2019 breakout above the 2016 high at 1375 was a significant development, opening the door for fresh record highs and an acceleration beyond the next major psychological barrier at 2000. Setbacks should now be well supported above 1600.



- **R2 1917** - 1 June high - Strong
- **R1 1878** - 16 November high - Medium
- **S1 1753** - 15 December low - Medium
- **S2 1722** - 29 September low - Strong

GOLD (SPOT) - fundamental overview

The yellow metal continues to be well supported on dips with solid demand from medium and longer-term accounts. These players are more concerned about exhausted monetary policy, extended global equities, and coronavirus fallout. All of this should keep the commodity well supported, with many market participants also fleeing to the hard asset as the grand dichotomy of record high equities and record low yields comes to an unnerving climax.



Any opinions, news, research, analyses, prices or other information ("information") contained on this Blog, constitutes marketing communication and it has not been prepared in accordance with legal requirements designed to promote the independence of investment research. Further, the information contained within this Blog does not contain (and should not be construed as containing) investment advice or an investment recommendation, or an offer of, or solicitation for, a transaction in any financial instrument. LMAX Group has not verified the accuracy or basis-in-fact of any claim or statement made by any third parties as comments for every Blog entry.

LMAX Group will not accept liability for any loss or damage, including without limitation to, any loss of profit, which may arise directly or indirectly from use of or reliance on such information. No representation or warranty is given as to the accuracy or completeness of the above information. While the produced information was obtained from sources deemed to be reliable, LMAX Group does not provide any guarantees about the reliability of such sources. Consequently any person acting on it does so entirely at his or her own risk. It is not a place to slander, use unacceptable language or to promote LMAX Group or any other FX and CFD provider and any such postings, excessive or unjust comments and attacks will not be allowed and will be removed from the site immediately.